

Wiring Harnesses

Model 801-4, 801-6, 801-8

10 Pin Harness
Loop Detectors and AVI Receivers



Connector: MS-3106A-18-1S (10 pin)
Length: 801-4 (4 ft.) 801-6 (6 ft.) 801-8 (8 ft.)
Wire Size: #22 AWG
Wire Type: MIL-W-16878/17 Type B/N

Jacket: PVC Gray
Termination: None
Twisted Wires: Pins D & E – loop wires

Pin	Wire Color	Pin	Wire Color
A	White	F	Yellow
B	Brown	G	Blue
C	Black	H	Green
D	Red	I	Violet
E	Orange	J	Gray

Model 801W-4, 801W-6, 801W-8

10 Pin Harness
TS 2 Cabinet Power Supply

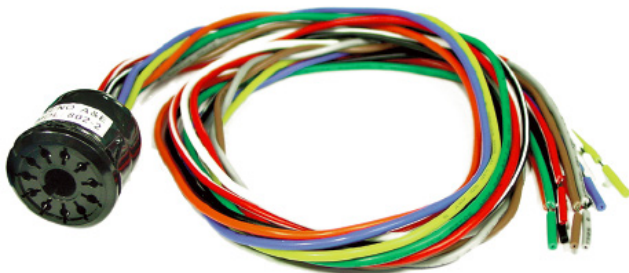


Connector: MS-3106A-18-1SW (10 pin), key is rotated to W position
Length: 801W-4 (4 feet) 801W-6 (6 feet) 801W-8 (8 feet)
Wire Size: See table below
Wire Insulation: Cross-link Polyethylene (XLPE), 0.020" thick
Jacket: PVC (brown)
Termination: None

Pin	Wire Color	Size	Pin	Wire Color	Size
A	White	22AWG	F	–	N.C.
B	Brown	22AWG	G	Gray	16AWG
C	Black	22AWG	H	Green	22AWG
D	Red	16AWG	I	Yellow	22AWG
E	Orange	16AWG	J	Blue	22AWG

Model 802-2

11 Pin Harness
Loop Detectors



Connector: Similar to Amphenol 78-S11 (11 pin)
Length: 2 feet
Wire Size: #20 AWG
Wire Type: PVC 105°C / 600V
Termination: None

Pin	Wire Color	Pin	Wire Color
1	Black	7	Gray
2	White	8	Brown
3	Orange	9	Red
4	Green	10	Black/White
5	Yellow	11	Red/White
6	Blue		

Headline Here

Model 802-4

11 Pin Harness
Loop Detectors



Connector: 78-S11 (11 pin)
Length: 4 ft.
Wire Size: #20 AWG
Wire Type: PVC 105°C / 600V
Jacket: Nylon mesh (30 in. long)

Termination: None
Twisted Pairs:
Pins 7&8
Pins 10&11

Pin	Wire Color	Pin	Wire Color
1	Black	7	Gray
2	White	8	Brown
3	Orange	9	Red
4	Green	10	Black/Whit
5	Yellow	11	Red/White
6	Blue		

Model 804-4, 804-8

19 Pin Harness
Loop Detectors



Connector: MS-3106A-22-14S (19 pin)
Length: 804-4 (4 ft.) 804-8 (8 ft.)
Wire Size: #22 AWG
Wire Type: MIL-W-16878/1 Type B/N
Jacket: PVC (black)
Termination: None

Twisted Pairs:
Pins D&E
Pins F&G
Pins J&K
Pins L&M

Pin	Wire Color	Pin	Wire Color	Pin	Wire Color
A	White	H	Green	R	Violet
B	Gray/Black	J	Orange	S	White/Violet
C	Black	K	White/Orange	T	Gray
D	Brown	L	Yellow	U	White/Gray
E	White/Brown	M	White/Yellow	V	White/Black
F	Red	N	White/Blue		
G	White/Red	P	Blue		

Model 415-2104-10

4 Pin Harness (Phase Green Interface)
Use with Model U Series Detectors

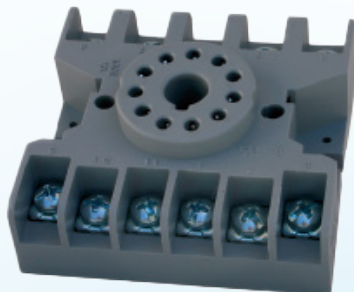


Connector: Amp 206060-1 (4 pin)
Length: 10 feet
Wire Type: UL 1015
Wire Size: #18 AWG
Termination: None

Pin	Wire Color	Function
1	Brown	Channel 1 Green Input
2	Red	Channel 2 Green Input
3	Orange	Channel 3 Green Input
4	Yellow	Channel 4 Green Input

Model SKT-11

Socket Base
Loop Detectors



Female, relay type socket base (11 pin)
Screw mount (not DIN rail mountable)
Termination: Screw terminals

