



**Product: All Monitors**

**Title: Testing Reno A&E Monitors using ATSI Monitor Testers**

**Release Date: September 15, 2009**

**Scope: All Reno A&E Monitors.**

This document will detail the configuration needed for each of our monitors to be tested with ATSI automated monitor testers.

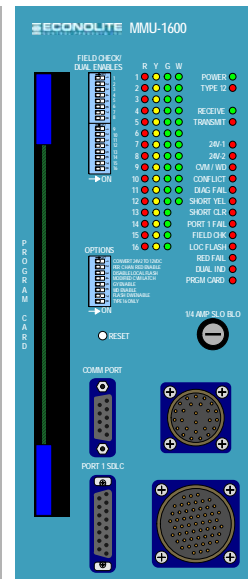
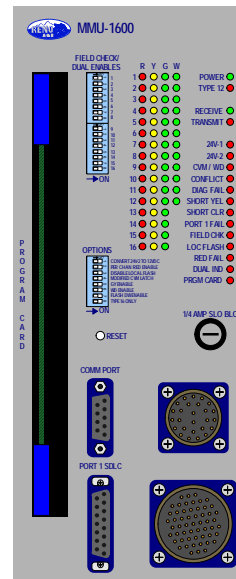
A common user issue with Reno A&E monitors is not understanding why the monitor is beeping at a one hertz rate. Whenever a configuration setting for the monitor is changed, the monitor will start beeping at a one hertz rate to signify that a configuration change is pending. The user should make all applicable changes to the configuration and, when done, press the RESET button to accept the new configuration. The older monitors will only require the user to press the RESET button, the newer models (or upgraded older models) will require the user to press and hold the RESET button for five seconds to accept the new configuration. The monitor should not be tested while it is beeping as this indicates that the configuration needed for testing is not currently active and will most likely result in faults during testing.

It is not uncommon to have a monitor fail the Line Voltage Hysteresis test. If the line voltage changes, even slightly, during the test this can occur. Simply retesting the monitor will usually correct the fault.

If you are having problems getting a monitor to pass test, please contact Reno A&E Technical Support at (775) 826-2020 to go over your testing procedures before assuming that the monitor is defective.

**MMU1600-0 (MMU1600 with 8 Option Switches)**

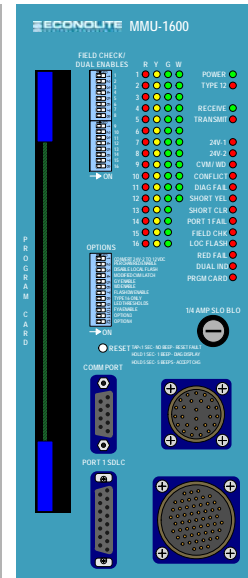
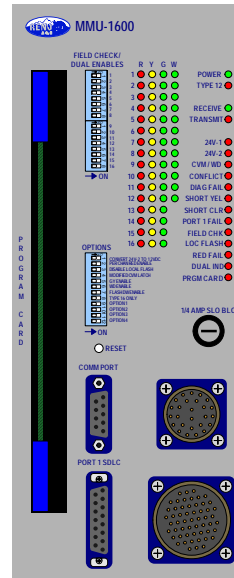
- Field Check / Dual Enables All ON
- Option Switches All OFF
- Program Card Permissives None (No Jumpers Installed)
- Program Card MYCD Jumpers None (No Jumpers Installed)
- Program Card Min Flash Time None (No Jumpers Installed)
- Program Card Latches None (No Jumpers Installed)





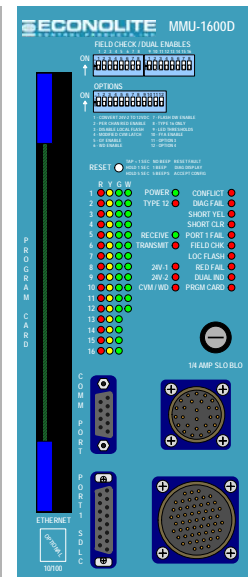
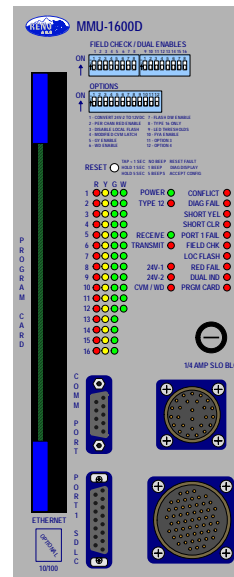
### MMU1600-1 (MMU1600 with 12 Option Switches)

Field Check / Dual Enables	All ON
Option Switches	All OFF
Program Card Permissives	None (No Jumpers Installed)
Program Card MYCD Jumpers	None (No Jumpers Installed)
Program Card Min Flash Time	None (No Jumpers Installed)
Program Card Latches	None (No Jumpers Installed)



### MMU1600-2 (MMU1600D or MMU1600DE)

Field Check / Dual Enables	All ON
Option Switches	All OFF
Program Card Permissives	None (No Jumpers Installed)
Program Card MYCD Jumpers	None (No Jumpers Installed)
Program Card Min Flash Time	None (No Jumpers Installed)
Program Card Latches	None (No Jumpers Installed)

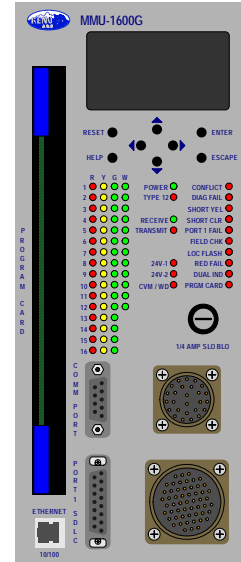




### MMU1600-2 (MMU1600G or MMU1600GE)

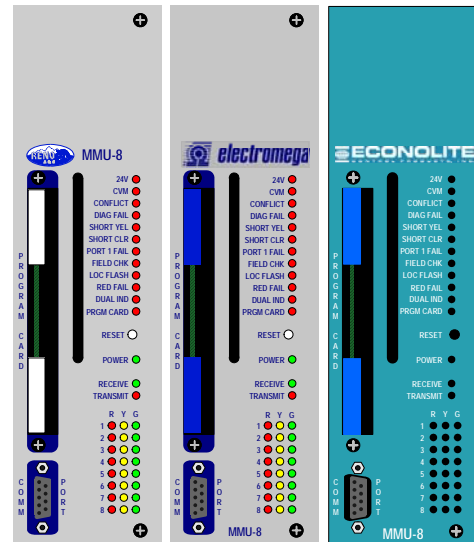
On the Main Menu select "Configuration Settings", then "Fault Monitoring Settings", then "Testing Defaults", then select "YES" and press the ENTER button.

- Program Card Permissives None (No Jumpers Installed)
- Program Card MYCD Jumpers None (No Jumpers Installed)
- Program Card Min Flash Time None (No Jumpers Installed)
- Program Card Latches None (No Jumpers Installed)



### MMU0800-0 (MMU8)

- Field Check / Dual Enables All ON
- Option Switches All OFF
- Program Card Permissives None (No Jumpers Installed)
- Program Card MYCD Jumpers None (No Jumpers Installed)
- Program Card Min Flash Time None (No Jumpers Installed)
- Program Card Latches None (No Jumpers Installed)





### 2018 (210 Mode of Operation - 16 Channel)

Dual Enable Switches	All ON
Red Fail Switches	All ON
Option Switches	All OFF
Option Jumpers	No Option Jumpers
Watchdog Switch	Enabled (If Installed)
Program Card Permissives	16 Channel Card with All Diodes Installed
Program Card Yellow Disables	None (No Jumpers Installed)

### 2018 (210 Mode of Operation - 18 Channel)

Dual Enable Switches	All ON
Red Fail Switches	All ON
Option Switches	All OFF
Option Jumpers	No Option Jumpers
Watchdog Switch	Enabled (If Installed)
Program Card Permissives	18 Channel Card with All Diodes Installed
Program Card Yellow Disables	None (No Jumpers Installed)



### 2018 (2010 Mode of Operation - 16 Channel)

Dual Enable Switches	All ON
Red Fail Switches	All ON
Option Switches	1-6 OFF, 7 ON, 8 OFF
Option Jumpers	No Option Jumpers
Watchdog Switch	Enabled (If Installed)
Program Card Permissives	16 Channel Card with All Diodes Installed
Program Card Yellow Disables	None (No Jumpers Installed)

### 2018 (2010 Mode of Operation - 18 Channel)

Dual Enable Switches	All ON
Red Fail Switches	All ON
Option Switches	1-6 OFF, 7 ON, 8 OFF
Option Jumpers	No Option Jumpers
Watchdog Switch	Enabled (If Installed)
Program Card Permissives	18 Channel Card with All Diodes Installed
Program Card Yellow Disables	None (No Jumpers Installed)