

Automatic Vehicle Identification

AVI - XM and AVI - XMS Transmitters

Secure Transmitters

The AVI-XM and AVI-XMS transmitters are each composed of two electrically connected modules mounted separately on a vehicle. One module broadcasts an unique code (like an assigned password) generated by the other module. This second module also connects to the electrical system of the vehicle for power. Their operations are identical; however, they differ in the size of their broadcasting modules. Operation and installation of the AVI-XM(S) is simple and can be performed on any vehicle.

The AVI-XM and AVI-XMS transmitters work with an off-vehicle receiver usually located at the point of access of a secured or gated area, for example, inside a gate controller cabinet. The receiver is electrically connected to a loop installed in the pavement that it uses to pick up the broadcasted code from the vehicle transmitters as the vehicle passes over the loop. When a valid code is detected by the receiver, the receiver sends a signal to the gate controller to open the gate. (See pre-formed loops product line.)

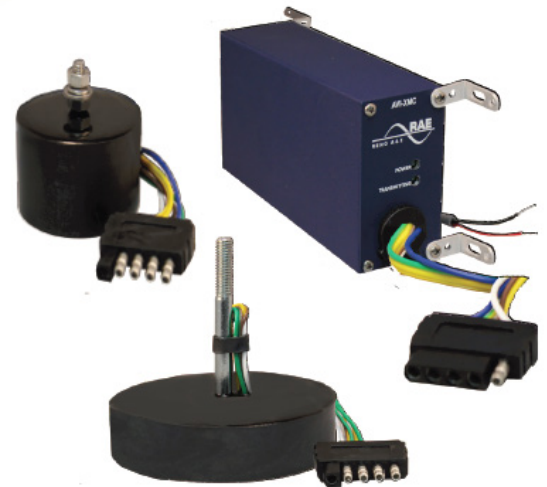
The AVI-XM transmitter uses the large AVI-XMT module for broadcasting. The AVI-XMS transmitter uses the smaller AVI-XMST module for broadcasting. Both transmitter types use the AVI-XMC module for code generation.

The AVI-XMT and AVI-XMST are mounted on the undercarriage of a vehicle. The AVI-XMC is secured higher in the engine compartment and is inaccessible from the undercarriage. If the broadcasting module is stolen off a vehicle's undercarriage, and disconnected from the AVI-XMC, it cannot on its own broadcast a valid code. This design thus allows for a secure placement of the vehicle transmitter. A replacement broadcasting module is easily installed via a water-tight quick disconnect in between the 72-inch and 48-inch multi-conductor cables connecting the two modules.



The AVI-XM and AVI-XMS are manufactured with durable and heat resistant components to ensure that the operation and functionality is reliable in any environment required.

**SAVES SECONDS
SAVES LIVES**



- **19,683 protected codes available**

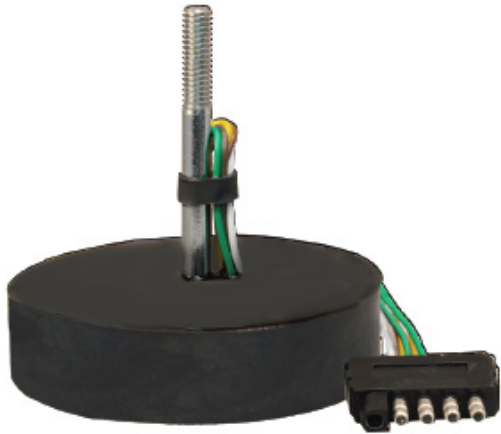
- **Downward compatibility with existing AVI systems**

- **Inoperable if removed from vehicle power**

- **Over 30 years of use in the private and public sectors**

- **Easy to install and set up without special tools**

AVI - XMT



FEATURES

- Simple Installation
- Secure Installation
- Durable and reliable
- Over 19,600 codes available
- Compatible with existing AVI system
- No special tools needed

AVI - XMTS



HIGHLIGHTS

- Two sizes of transmitters are available
 - XMT model is 4.6 inches in diameter (11.7 cm)
 - XMTS model is 2.6 inches in diameter (6.6 cm)
- Both models are operationally the same
- Uses quick disconnect connectors
- Powered by 12 to 40 VDC, current less than 100 mA
- Can be connected to any switched power source
- Optimal security with preselected codes
- AVI System applications
 - Emergency Vehicle Pre-emption access to secure and gated communities
 - Regulated locations such as airports and parking structures
 - Bus/Transit Priority
 - Estate or private gate access
 - High speed door operations
- This AVI product line has been in use for more than 30 years with reliable and continuous operations in both the public and private sectors

AVI - XMC

System intelligence is located remotely from the transmitter

